

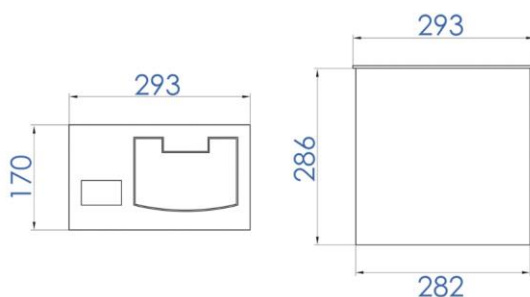
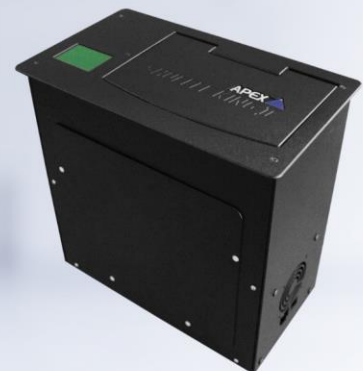
the next level

SHUFFLE KING 2

ELECTRONIC CARD SHUFFLER

Shuffling of cards will be accomplished in a single cycle. Cards are randomly distributed to 52 trays one by one, and they are subsequently lifted to the position for withdrawal. Each card is counted; the total number is shown on display. If there is a different number than 52, operator is notified of a wrong card number in the inserted pack.

- For 1 Deck of Cards
- One shuffling cycle takes 35 sec.
- Controls the number of cards in a pack
- Increases the game's productivity
- Easy handling
- GLI-29 compliant



APEX 
www.apex-gaming.com



sales@apex-gaming.com